



# MATSUURA CO., LTD.

株式会社 松浦

**CERTIFICATION** JIS Q 9100, Nadcap (Welding), ISO 9001, ISO 14001

**WEBSITE** <http://www.kk-matsuura.co.jp>

## Outline of Business

- Aerospace parts
- Manufacturer of transportation equipment
- Other products (parts for automobiles, parking support equipment, electrical distribution, etc.)



## Our Strengths

■ Major customers highly evaluate the following aspects of our products:

- 1) On-time delivery
- 2) High quality
- 3) Reasonable prices

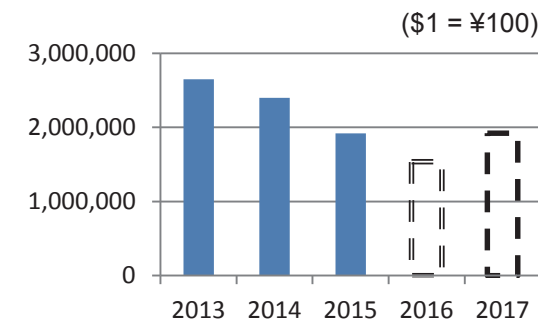
We do our best to meet customers' requests and gain their trust.



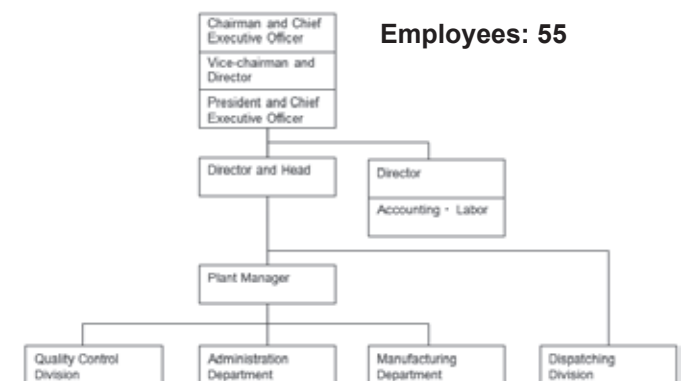
## Facility & Equipment

- 1000-ton hydraulic double-action type press (introduced in Feb. 2016)
- 500-ton hydraulic single-motion type press
- Clamp press (250 ton, 200 ton, 140 ton and 100 ton)
- 2D laser beam machine
- NC turret punching machine (2 sets)
- Shearing machine (3 sets)
- Bending machine (125 ton, 100 ton and 60 ton)
- TIG automatic welding machine (introduced in Feb. 2016)
- TIG welding machine (for aircraft, 3 sets)
- Conical roll molding machine (introduced in Jan. 2016)

## Sales Amount



## Organization



## Important Information / Notices

■ Selling points

We mainly produce parts in small volumes in efficient combination with mass-produced parts. We strive to create a good, comfortable workplace and work hard to provide customers with products which benefit society and are eco-friendly.

## Company Profile / Contact

<b>Representative</b>	Takahiro Matsuura	<b>Address</b>	1296 Honjo, Komaki, Aichi 485-0821, Japan
<b>Capital</b>	US\$100,000 (\$1 = ¥100)	<b>TEL</b>	+81-568-78-3111
<b>Major Customers</b>	Mitsubishi Heavy Industries Ltd.	<b>E-mail</b>	office1@kk-matsuura.co.jp