



Meinan Machinery Works Co., Ltd.

有限会社 名南機械製作所

CERTIFICATION JIS Q 9100 (scheduled in 2016), MSJ 4000

WEBSITE <http://meinan-kikai.co.jp>

Outline of Business

- Manufacture of machined parts for aerospace industry
- Design and manufacture of jigs & tools and parts for aircraft assembly
- Manufacture of prototype parts for automobiles
- Manufacture of parts for special machines

Our Strengths

- Machining of aluminum, titanium, and other hard-to-cut materials as well as 3D profiling
- Manufacture of serrated parts
- Rotary grinding
- We are able to respond to urgent orders for materials, quenching, surface treatment, and other special processes because our office and factory are conveniently located both for our workers and sub-contractors.
- We have received an excellent company award from JAXA and Mitsubishi Heavy Industries several times.



Serrated part



Part of hard-to-cut material



Aluminum part drilled with an angle head machine

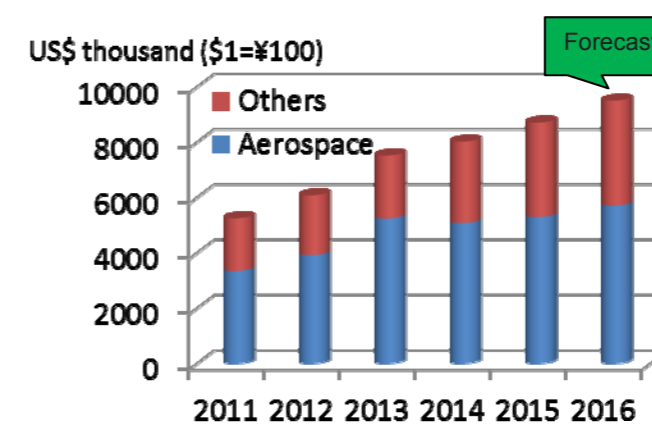
Important Information / Notices

The R&D Division for next-generation industry reports directly to the president. We have been collaborating with Nagoya Institute of Technology on the development of a training robot for rehabilitation for five years. In addition, we are developing in-house an industrial robot for aircraft assembly.

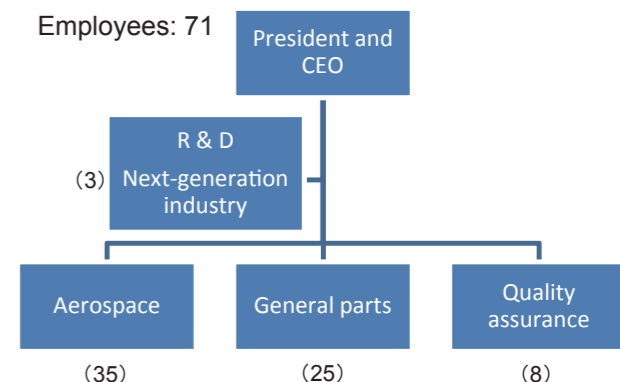
Facility & Equipment

Device	Processing Capacity	Manufacturer	Model	Q'ty
5-axis machining center	630×560×510, 60×660×610	Matsuura, Mazak	MX-520, VARIAXIS I-500	2
Turn mill center	φ500×450×200×1225	Mazak	INTEGREX 200-4ST, other	3
	φ600×500×600×160	Okuma	MULTUS B200 II, LB3000EX	2
4-axis machining center	630×630	Mitsubishi	DH60, MH-60E	2
NC machine				17
Surface grinding machine	1250×600×595	Okamoto	PSG126DX	5
Rotary grinding machine	φ1500	Ichikawa	ICB-1500	4
NC bandsaw	30×430×430	Amada	PCSAW430	1
WEDM	1050×820 ×305	Mitsubishi	MV2400S	1
Measuring machine	900×1600×600	Mitsutoyo, Faro	Crysta Apex S9166	2
CATIA V5				1
CAD CAM			CATIA V5, Auto CAD, Surfcam, other	19

Sales Amount



Organization



Company Profile / Contact

Representative	Yukio Kobayashi	Address	39 Ahara-cho, Minami-ku, Nagoya, Aichi 457-0063, Japan
Capital	US\$100,000 (\$1.0=¥100)	TEL	+81-52-823-2810
Major Customers	Mitsubishi Heavy Industries, Ltd. JFE Steel Corporation	E-mail	y.kobayashi@meinan-kikai.co.jp