



TAMAGAWA INDUSTRIES, LTD.

玉川工業 株式会社



CERTIFICATION JIS Q 9100, JIS Q 9001, MSJ 4000, MS 84001

WEBSITE <http://www.md.ccnw.ne.jp/tamagawa/>

Facility & Equipment

5Axis Machining Center	1 MAZAK	VARIAXIS 730-5X II	730×850×560
Gantry-Type Machining Center	1 MITSUBISHI	MVR30	4,200×3,000×700
Horizontal Machining Center	2 NIIGATA	ULTY501	800×850×750
NC Vertical Lath	1 OM	VTLex1250	φ1,200×1,160×2Axis
NC EDM	1 SODICK	AQ75L	700×500×350
NC Small Hole Drill EDM	1 ELENIX	CT500FX	550×380×450
Wirecut EDM	1 CHARMILLES	ROBOFIL510	700×400×400
CMM	1 MITSUTOYO	C9106	850×1,000×600

Outline of Business

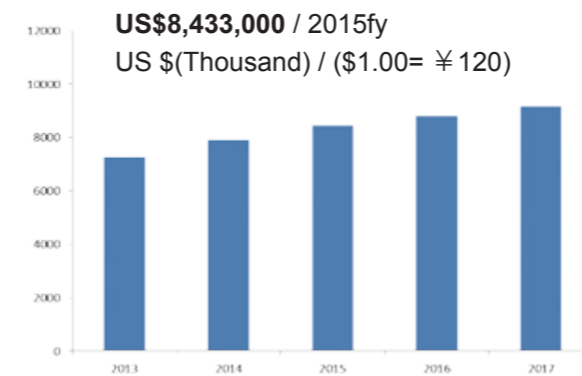
- Manufacture of parts for aircraft, space equipment, and nuclear power equipment
- Design and manufacture of hydraulic equipment, various testing equipment, and jigs & dies
- Structural sub-assembly and parts repair of aircraft

Our Strengths

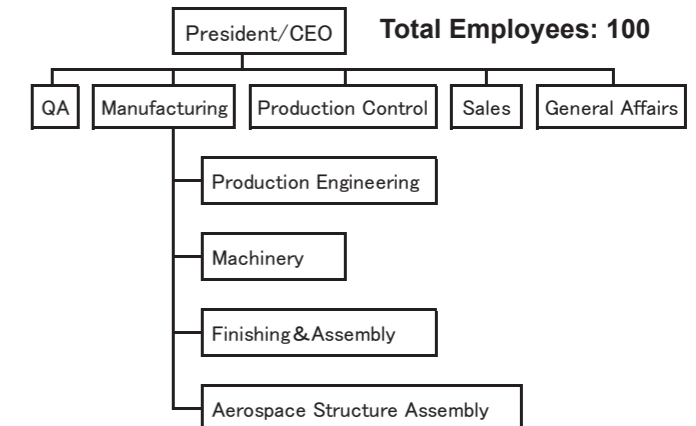
- We have more than 40 years of experience of manufacturing aerospace parts, where high quality and reliability are essential. We actively accept difficult jobs, with our keen curiosity and ambitious engineering spirit.
- We have technologies such as machining difficult-to-process materials (nickel based alloys), machining composite materials (CFRP, etc.), and manufacturing functional parts of missiles.



Sales Amount



Organization



Company Profile / Contact

Representative Takahiko Yoshida
Shiori Yoshida

Capital US\$100,000

Major Customers Mitsubishi Heavy Industries, Ltd.
Daicel Corporation.
Toray Industries, Inc.

Address 1218-18, Jifuku, Kagiya-cho,
Kasugai, Aichi, 480-0304, Japan

TEL +81-568-88-6551

E-mail tamagawa@md.ccnw.ne.jp