



TOHMEI GROUP (TOHMEI Ind.)



東明グループ (東明工業 株式会社)

CERTIFICATION JIS Q 9100:2009 , JIS Q 9001 : 2008 , JIS Q 27001:2014 ,
JIS Q 14001: 2004

WEBSITE <http://www.tohmei.com>

Outline of Business

- **Assembly of aerospace structure**
- **Periodic inspection and maintenance of aircraft**
- **Design and manufacture of fixtures, assembly tools and mechanical devices**
(electrical, hydraulic, pneumatic servo-control technology)
- **Manufacture of advanced composite products**
- **Manufacture of special containers for aircraft and space equipment**

Our Strengths

- **Aerospace industry**
Assembly, painting and installation of aerospace structures
Design and manufacturing of assembly tools
Transportation of aerospace products with special packing services
- **Inspection and test equipment**
We propose and fabricate a wide range of devices fully utilizing our electrical, hydraulic, and pneumatic servo-control technology.
- **Advanced composites including design**
The Tohmei Group produces advanced composite products through our integrated production system.
Design and stress analysis including tooling, fabrication, assembly, and painting.
Design **Tohmei Engineering Co.**
Fabrication **PNC Co., Ibaraki Ind.**
Assembly & painting ... **Tohmei Ind.**



HTV structure



Collision test drive



Autoclave

Facility & Equipment

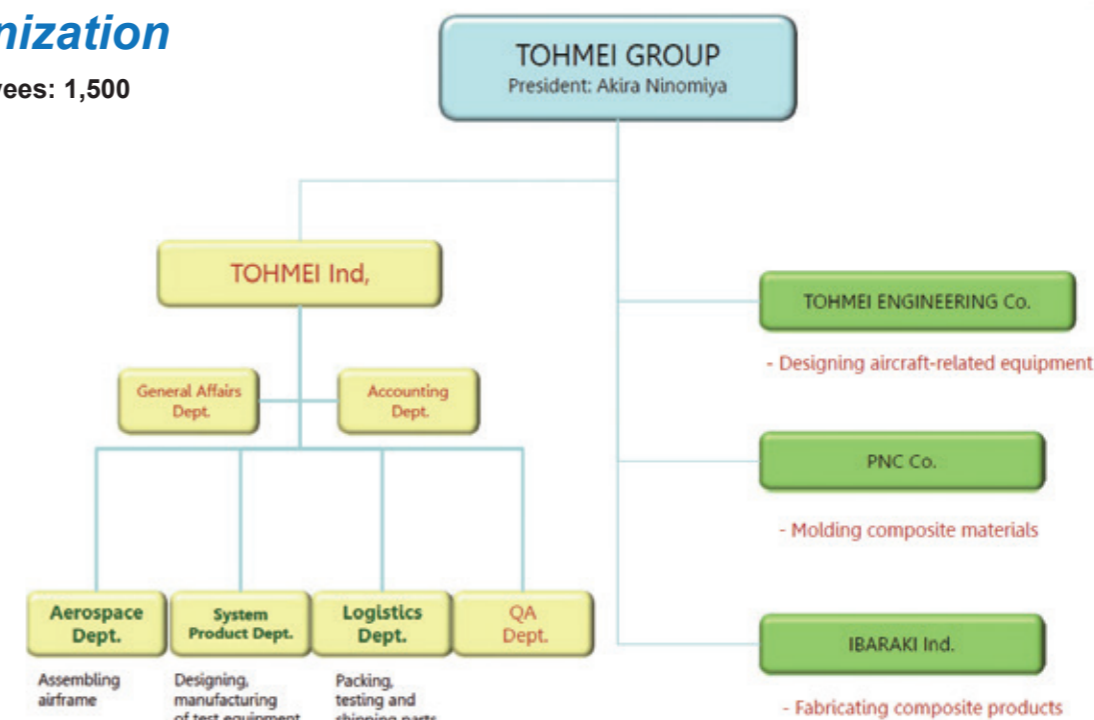
Automatic riveter
Paint booth (L: 18m, W: 5m, H: 5.5m)
Autoclave (D: 2m, L: 5m, max 200°C)
Thermoplastic 80t press (600 × 600 mm, Max: 450°C)
NDI, CMM
CATIA V5, NASTRAN

Sales Amount

US\$100 million (2014)

Organization

Employees: 1,500



Company Profile / Contact

Representative Akira Ninomiya
Capital US\$830,000
Major Customers MHI, KHI, FHI

Address 2-11 Shinkatanaike, Chita, Aichi
478-0069, Japan
TEL +81-562-54-1881
E-mail info@tohmei.com