



# TOKUDA INDUSTRIES CO., LTD.



徳田工業 株式会社

**CERTIFICATION** JIS Q 9100, JIS Q 9001 (ISO 9001), MSJ4000

**WEBSITE** <http://www.tokuda.co.jp/>

## Outline of Business

### Aerospace

Our company specializes in machined parts of aircraft, design fabrication of jigs and tools for aircraft, and the production of various types of models for technical verification (wind-tunnel experiment models or mock-ups). We also assemble easy parts of aircraft.



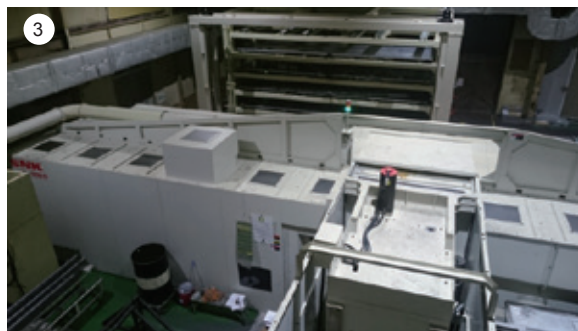
### Others

We design and manufacture jigs for automobiles (forming dies, check jigs, etc.) and produce medical equipment (laryngoscopes). We manufacture solid terrain models from digital data.

## Our Strengths

We manufacture aircraft parts from various materials (e.g. aluminum, titanium, stainless steel, and CFRP). We possess 33 spindles, and can manufacture materials up to 17 m in length. We perform unattended continuous machining and possess process machines with the following features:

1. An automatic line that produces small parts continuously by one chuck
2. A mechanism that continuously produces a single material
3. A system that can stock up to 6 pallets (2000×6000) and carry them automatically

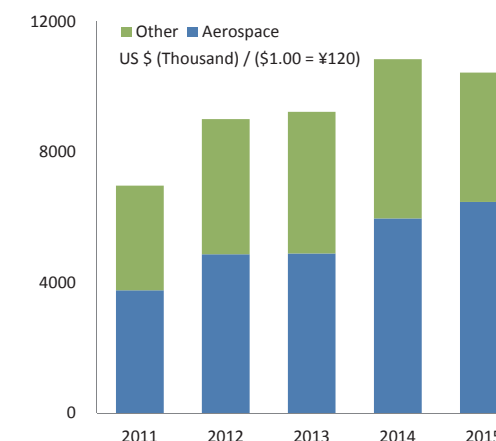


## Facility & Equipment

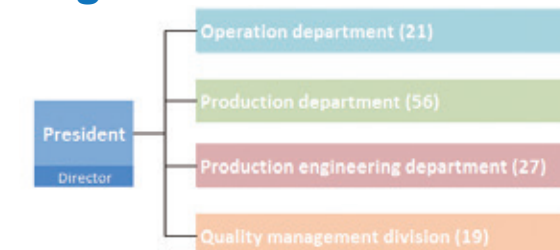
Model	Maker	Axis	Stroke	Specification
Tricept T805	PKM	5	200×500	30000rpm (Patent acquired)
Vertex 550-5X	MITUI	5	550×600	20 pallet changer
C30U	HERMLE	5	650×600	20 pallet changer
e-1060V8	Mazak	5	1875×1060	6 pallet changer
HPS-150B	SNK	5	6150×1800	2 pallet changer + 6 pallet stocker
Mycenter-H300SC	Mazak	5	400×425	Continuous machining line
INTEGREX 300-III	Mazak	5	630×230	Continuous machining line
RB-200F	SNK	5	10250×2900	2 pallet changer
HPS-120B	SNK	5	4460×1400	2 pallet changer
HX-150B	SNK	5	1500×4000	30000rpm
HSM-Modal	EEW	5	17000×5000	Extremely large process machine
A55	MAKINO	4	560×560	21 pallet changer
a81M	MAKINO	4	900×800	8 pallet changer
YBM800N	YASUDA	4	1100×800	6 pallet changer

and other × 19

## Sales Amount



## Organization



## Important Information/Notices

We have a patent for a continuous processing system.  
We have been granted permission to manufacture medical equipment.

## Company Profile / Contact

**Representative** Yasuaki Tokuda  
**Capital** US\$250,000  
**Major Customers** KHI, NIPPI, MHI, FHI, TOYOTA, FUTABA

**Address** 209 Kinzokudanchi, Kakamigahara, Gifu 504-0957, Japan

**TEL** +81-58-380-0003

**E-mail** sawai@tokuda.co.jp